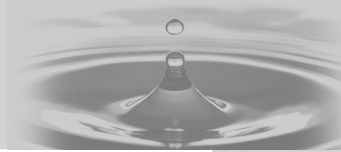


Rotary Joint (RJ)



SRJ Series

- SRJ Series are strong against corrosion and impact because of its brass body.
- SRJ Series are easy to install because of its small size and light weight.
- SRJ Series have very low resistance against rotation.
- SRJ Series are complete no-lubrication type.



SRJ

How to order

SRJ 4000 A - 04 L

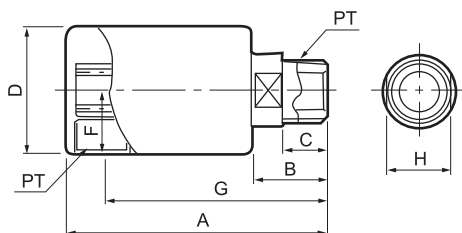
- ① Rotary Joint
- ② **Body Size**
 - 2000 - 1/4
 - 3000 - 3/8
 - 4000 - 3/4
 - 6000 - 1
- ③ **Media Fluid**
 - A - Air
 - W - Water
- ④ **Port size**
 - 02 - Rc(PT) 1/4"
 - 03 - Rc(PT) 3/8"
 - 04 - Rc(PT) 1/2"
 - 06 - Rc(PT) 3/4"
- ⑤ **Direction of connecting screw**
 - R - Right
 - L - Left

Specification

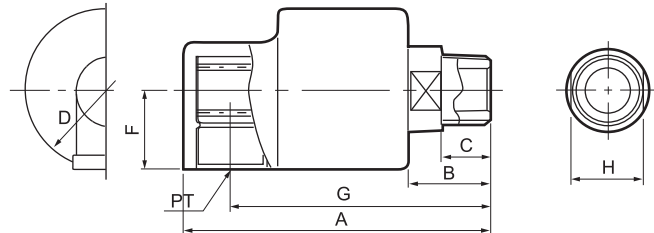
Fluid	Air, Water	
Max. temperature	80°C	
Max. pressure	0.97MPa [9.9 kgf/cm ²]	
Number of Max. rotation	for Air	1200 rpm
	for Water	500 rpm

DIMENSIONS (mm)

SRJ 2000, 3000



SRJ 4000, 6000



Model	PT	A	B	C	D	F	G	H	Weight(g)
SRJ 2000-01	PT 1/8	90	25	12	40	20	76	19	320
SRJ 2000-02	PT 1/4	93	28	12	40	20	79	19	320
SRJ 3000-03	PT 3/8	94	30	14	40	20	82	19	314
SRJ 4000-04	PT 1/2	117	36	16	55	24	97	25	912
SRJ 5000-06	PT 3/4	124	37	18	61	25	103	32	1,208
SRJ 6000-10	PT 1	141	44	20	74	32	115	38	1,946